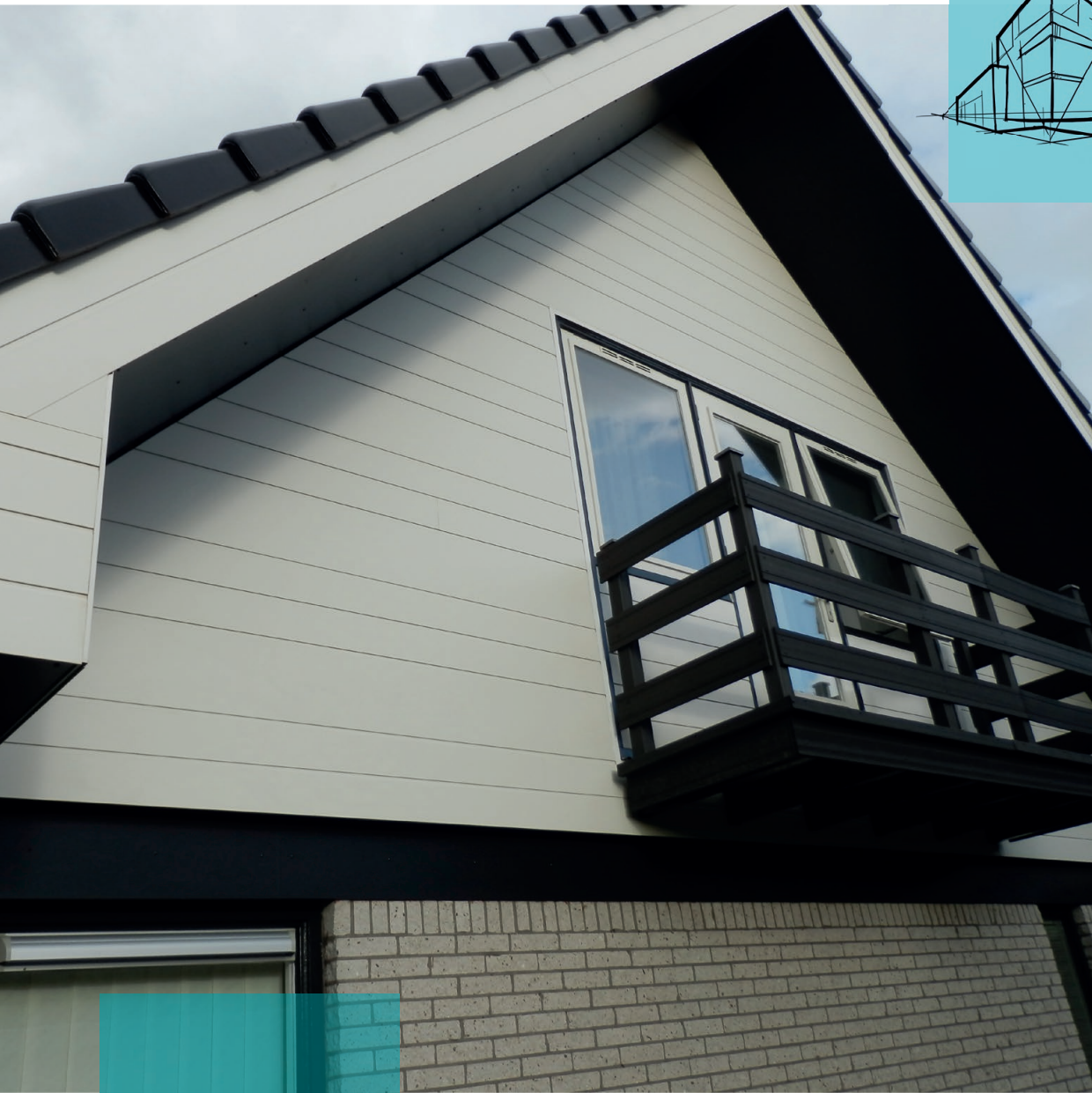
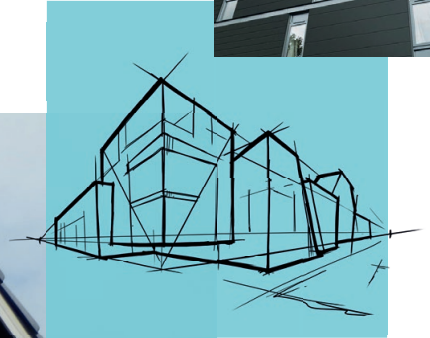


Product Data Sheet Rockpanel Lines²



Rockpanel Lines²

Key
product
data

Product description

Play around with traditional facade designs – use lines as a continuous element or to provide a stylish touch. With Rockpanel Lines² take the liberty to reinterpret the classic tongue and groove profile. Versatile, durable, easy to maintain and cost-effective.

Assortment

Product Line	Board Composition	Thickness	Standard dimensions	Working width
Rockpanel Lines ²	Lines ²	8 mm	164 (S) /295 (XL) x 3050 mm	151-156 (S)/282-287 mm (XL)
		10 mm	164 (S) /295 (XL) x 3050 mm	146 (S) /277 mm (XL)

Surface

The surface of Rockpanel Lines² is treated with a two-layer water-borne polymer emulsion paint on one side, in a limited range of colours.

Fire Safety

The Euroclass-classification of all Rockpanel products is based on testing with non-combustible mineral wool insulation. For the field of application covered by the classification please see the relevant Declaration of Performance. For high-rise buildings and high-risk buildings Rockpanel recommends the application of non-combustible (Euroclass A1-A2) cladding and insulation.

Key product properties

Rockpanel Lines ²	Rockpanel Lines ² 8	Rockpanel Lines ² 10	Unit	Test/classification method
Optical properties				
Colour stability (5000 h)	3-4 or better	3-4 or better	class on greyscale	ISO 105 A02
Fire				
Fire classification	B-s2,d0**	B-s2,d0	Euroclass	EN 13501-1
Physical properties				
Thickness	8	10	mm	EN 325
Weight	8.4	10.5	kg/m ²	
Density, nominal	1050	1050	kg/m ³	EN 323
Thermal conductivity	0.37	0.37	W/m·K	EN 10456
Water vapour permeability S _g (at 23 °C and 85 % RF) Colours	*	*	m	EN 12572
Coefficient of thermal expansion (mm/m·K)	10.5	10.5	10 ⁻³ mm/m·K	EN 438:2 clause 17
Coefficient of moisture expansion (after 4 days) (mm/m)	0.302	0.302	mm/m	EN 438:2 clause 17
Mechanical properties				
Bending strength, length and width (f ₀₅)	27	27	N/mm ²	EN 310 / EN 1058
Modulus of elasticity m (E)	4015	4015	N/mm ²	EN 310

* not applicable non ventilated.

** For a complete overview and description of the end use situation in which the classification is determined, please consult the relevant European Technical Assessment.

Fixing distances

Maximum Fixing distances (mm)	Rockpanel Lines ² 8		Rockpanel Lines ² 10	
	b max.	a max.	b max.	a max.
Nail	N/A	N/A	600	146/277
Screw	600	151-156 / 282-287	600	146/277

Test in this document are executed according the European Assessment Document (EAD 090001-00-0404) for Rockpanel boards.

Rockpanel boards

General
product
information

The Rockpanel boards are produced from compressed natural basalt, a sustainable and readily available volcanic rock and bonded with an organic binder from which all Rockpanel products derive their unique properties. The products combine the advantages of stone and workability of wood.

Fire safety

Rockpanel boards offer high performance when assessed for reaction to fire. Due to the nature of the stone wool fibres and the low binder content the boards have a low calorific value, this means that they will hardly contribute to a fire when exposed. As a result, the addition of environmentally unfriendly flame retardants is not needed. The Rockpanel products are tested in accordance with the European harmonized technical specification (EAD 090001-00-0404) and are classified in accordance with EN 13501-1. The reaction to fire classification is based upon the end use situation as described in the EAD with non-combustible mineral wool insulation. The field of application covered by the reaction to fire classification is given in the Declaration of Performance (DoP, see www.rockpanel.com).

For high-rise buildings and high-risk buildings Rockpanel recommends only the application of non-combustible (Euroclass A1-A2) cladding and insulation.

Sustainability and environment

Rockpanel Durable and A2 products have been independently certified for their environmental performance by the Building Research Establishment (BRE), complying with all requirements identified in the scheme document SD028. BRE granted Rockpanel an Environmental Product Declaration (Environmental Profiles Certificate No. 427) acknowledging Rockpanel Durable and A2 board material as amongst the best in their category with A+ and A ratings for various structures. Next to these Environmental Profiles ratings and Greenbook live registration, BRE issued for the Durable and A2 composition an ECO_EPD in accordance with EN 15804.

The influence on air quality and release of dangerous substances to soil and water has been determined to achieve the European Technical Assessment. The analysis showed Rockpanel boards contain no dangerous materials such as biocides; the manufacture of Rockpanel boards does not involve the use of flame retardants or cadmium. The formaldehyde concentration is ≤ 0.0105 mg/m³ which relates to formaldehyde class E1.

Packaging

The panels are provided with a protective film on the decorative face (with the exception of Rockpanel Metallics White Aluminium/Grey Aluminium, Natural, Lines² and Structures) and are delivered on pallets and with a protective cover and edge protection. The panels must be stored on a dry sub-soil and protected against rain, preferably under a cover. Pallets shall be stacked no more than two pallets high. The panels should be lifted upward when being handled and should not be slid over one another. Protective foam membranes should be placed between the sheets again to protect the surface layer, for example when the panels are stacked after having been sawn.

Visual appearance

Surface quality: Rockpanel boards are produced with the utmost care and individually checked before being approved. In the event of doubts the panels are judged visually for aesthetic flaws, in daylight, without sight enhancements, from a distance of at least 5 metres in front of the surface of the façade element, with an observation angle of 45° (horizontally/vertically).

Batches: Rockpanel boards are produced using incoming inspection, process assurance and quality control by which Rockpanel Colours boards in RAL/NCS colours out of different batches can be combined. However for all other products and for project related orders, the whole order for a given project must be ordered as a single batch.

Maintenance

Depending on the surface treatment, the boards can be cleaned with ordinary cleaning agents such as car shampoo dissolved in lukewarm water. Organic solvents for boards with the ProtectPlus finish are in general also allowed (such as white spirit and acetone), however consult Rockpanel for the correct application method. To remove graffiti, Rockpanel can supply a special cleaner.

The Rockpanel Natural boards can be cleaned with a brush. Stubborn pollution can be removed with a wire brush. The cleaned spot will then become visible and weather again. Do not clean Rockpanel Natural with a solvent or detergent.

Rockpanel Lines²

Detailed
product
information

Within our detailed product information section you can read about the impact resistance, suitable sub frames, fire properties and the specified fixings. Also visit www.rockpanel.co.uk for additional information on Rockpanel board material, such as a complete overview of the Rockpanel assortment, guidelines for processing and installation, specifications text, health and safety and application.

Impact resistance

Categories	Rockpanel Lines ² 8 mm	Rockpanel Lines ² 10 mm	Test / classification method
Hard body (1 J)	IV	IV	ISO 7892: 1988
Hard body (3 J)	III, II, I	III, II, I	

Application for full boards, for a complete overview and description, please consult the relevant European Technical Assessment.

Suitable sub frames

Rockpanel Lines² in Durable quality can be attached to the building by fixing to a wooden sub-frame. The vertical wooden battens should have a minimum thickness of 28 mm.

Properties in relation to fire

Product Grade	Vertical subframe***	Construction build-up	Fixing method	Classification
Lines ² 8 mm	Wooden sub frame	Ventilated with Rockpanel strips* (8 mm) on the battens	Mechanically fixed	B-s2,d0
	Wooden sub frame	Ventilated on battens	Mechanically fixed	C-s2,d0
Lines ² 10 mm	Mechanically fixed	Ventilated with EPDM gasket or Rockpanel strips* on the battens	Wooden sub frame	B-s2,d0

* gasket/strip 15 mm wider at both sides than the batten

** Check the pre-conditions for non-ventilated constructions or consult Rockpanel.

*** For a complete overview and description of the end use situation in which the classification is determined, please consult the relevant European Technical Assessment.

Fixings specified for use with Rockpanel Lines²

	Ring shank nail	Torx screw	Clip with screw ⁽¹⁾
Rockpanel Lines ² 8 mm	-	-	✓
Rockpanel Lines ² 10 mm	✓	✓	-
Sub frame ⁽²⁾	Wooden sub frame	Wooden sub frame	Wooden sub frame
Thickness subconstruction ⁽²⁾	≥ 28 mm	≥ 28 mm	≥ 28 mm
Material (body)	Stainless steel material nr. 1.4301 or 1.4578 according EN 10088	Stainless steel material nr. 1.4301, 1.4401 or 1.4578 according EN 10088	Stainless steel material nr. 1.4301 according EN 10088
Length	27 mm	30 mm	25 mm
Shank diameter	2.1-2.3 mm	3.5 mm	2.3 mm
Head diameter fixing	4.7 mm	6.8 mm	7.0 mm
Hole Ø fixed point	2.0 mm	2.5 mm	
Hole Ø moving point	3.0 mm	3.5 mm	

⁽²⁾ In accordance with paragraph "Suitable sub-frames"

European Technical Assessment (ETA)**Declarations of Performance (DoP)**

European Technical Assessment ETA-13/0204:

Rockpanel Lines², 8 mm and 10 mm tongue and groove panels finish Colours / Rockclad

0764-CPR-0250

Additional information

The product data sheet Rockpanel Lines² clearly specifies the general product properties and is not related to national building regulations. Relevant information about the application of Rockpanel boards related to national building regulations or national guidelines can be found in the Rockpanel instruction guide and on the Rockpanel website. The Rockpanel instruction guide and the website also provide fixing tables related to national annex of the EN 1991-1-4.

Published August 2021. This publication supersedes and replaces all previous datasheets. Subject to alterations. All data are intended to serve as general information about our products and their possible uses. This publication is an extract of the European Technical Assessment, which is the only legally binding document. ROCKWOOL B.V. / Rockpanel disclaims any liability towards possible (typing) errors and incomplete information in this product data sheet. No rights may be derived from the content of this publication.

www.rockpanel.co.uk

ROCKWOOL Ltd **Rockpanel**

Wern Tarw

Pencoed Bridgend

CF35 6NY

Tel.: +44 (0) 1656 863210

Fax: +44 (0) 1656 863611

www.rockpanel.co.uk